

WOODLEA MILL
MCLEAN, VIRGINIA



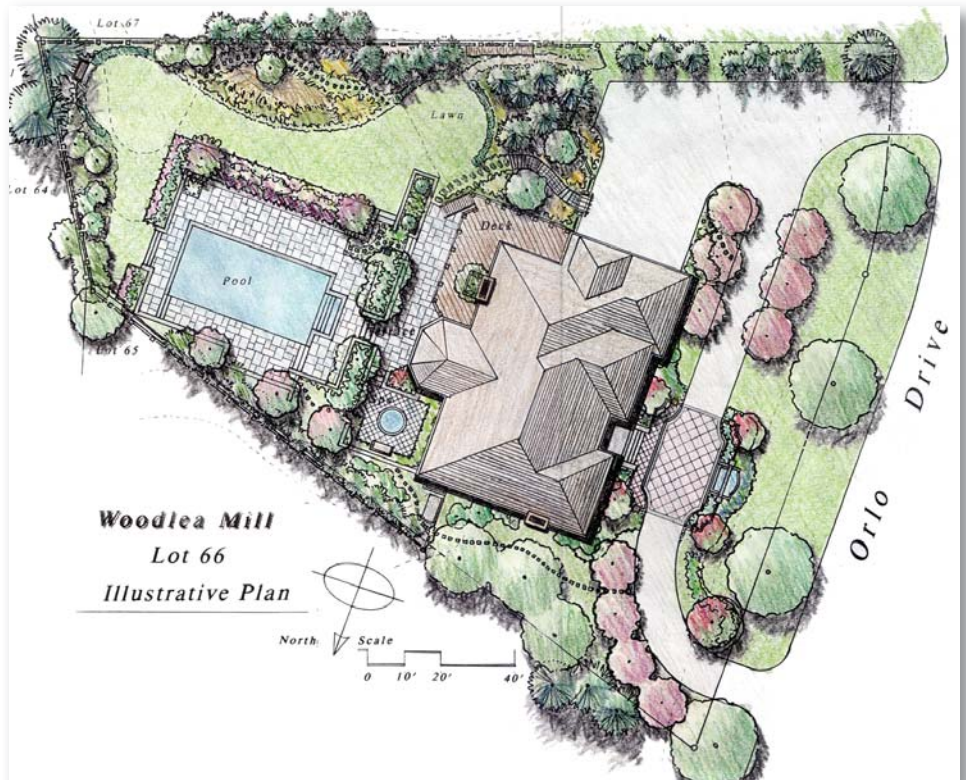
View of informal lawn and perennial gardens

Client: Name of client

Contractors: Name of contractor. (type of contractor)

Intent

LAPIERRE STUDIO developed a retrofit community landscape master plan for this now mature upscale Tysons Virginia neighborhood. Posed with the dilemma of repositioning an approved, yet unbuilt, 1960's era, 76 acre subdivision plan situated within a dramatically growing and competitive suburban Washington real estate market, the developer-builder retained LAPIERRE to create an established, estate-style open space infrastructure, and to provide personally tailored home & garden design services for each property owner. Individually customized home, landscape, and garden plans included wooded sites, open gardens, hill-side terraces, verandas, pool terraces & pavilions, thematic enclosed gardens, and specially paved arrival & auto courts for 69 multilevel homes, situated on .75 to 1.5 acre parcels. Due to the expansive house plans, tight side yard dimensions, close building proximities, and limited site areas, design solutions emphasized the use of mature, high quality plant material in concert with enduring landscape building materials, traditionally arranged and translated into contemporary situations, resulting in garden and courtyard settings reminiscent of the range of intriguing Virginia garden spaces to be found from Georgetown to Middleburg.



Illustrative Plan



Perennial Garden